

COMPATIBLE MODELS Latest version of Canon ST v5.103:

Errors that can be corrected code: 5B00 5B02 5B04 5B14 1701 1702 1700

MG77XX 57XX 56XX 55XX 54XX 53XX 42XX 82XX 35XX 36XX 68XX

IB40XX MB50XX 30XX IP87XX IX67XX IX68XX G1XXX G2XXX G3XXX... G4XXX...

MX IB MB IP IX G X K and more

For example:

E200 series:

E300 series:

E3100 series:

E400 series: E400, E404, E407, E408 (#1)

E410 series: E410, E414, E417, E418 (#1)

E460 series: E460, E461, E464, E468

E470 series: E470, E471, E477, E478 (#1)

E480 series: E480, E481, E484, E488, E489

G-series

G1000 series: G1000, G1100, G1200, G1400, G1500, G1800

G2000 series: G2000, G2100, G2200, G2400, G2500, G2600, G2800, G2900

G3000 series: G3000, G3100, G3200, G3400, G3500, G3600, G3800, G3900

G4000 series: G4000, G4100, G4200, G4400, G4500, G4600, G4800, G4900, G4902

G1010 series: G1010, G1110, G1210, G1410, G1510, G1810

G2010 series: G2000, G2100, G2200, G2400, G2500, G2600, G2800, G2900

G3010 series: G3010, G3110, G3210, G3410, G3510, G3610, G3810, G3910

G4010 series: G4010, G4110, G4210, G4410, G4510, G4610, G4810, G4910, G4912

IB-series

IB4000 series: IB4010, IB4020, IB4040, IB4050, IB4060, IB4070, IB4080, IB4090

IB4100 series: IB4110, IB4120, IB4140, IB4150, IB4160, IB4170, IB4180, IB4190

IP-series

IP7240, IP110, IP8740,

IP2870S, IP2880S

IX-series

IX6840,

MB-series

MB2000 series: MB2010, MB2020, MB2040, MB2050, MB2060

MB2100 series: MB2110 MB2120 MB2140 MB2150 MB2160

MB2300 series: MB2320, MB2340, MB2350, MB2360, MB2390

MB2700 series: MB2710 MB2720 MB2740 MB2750 MB2760 MB2790

MB5000 series: MB5010 MB5020 MB5040 MB5050 MB5060 MB5070 MB5080 MB5090

MB5100 series: MB5110 MB5120 MB5140 MB5150 MB5160 MB5170 MB5180 MB5190

MB5400 series: MB5410 MB5420 MB5440 MB5450 MB5460 MB5470 MB5480 MB5490

MG-series

MG2570S, MG2580S

MG3000 series: MG3010, MG3020, MG3022, MG3040, MG3050, MG3051, MG3052, MG3053, MG3060, MG3070, MG3077, MG3070S, MG3077S, MG3080, MG3090 (#1)

MG3600 series: MG3610 MG3620 MG3640 MG3650 MG3660 MG3670 MG3680

MG5500 series: MG5510, MG5520, MG5540, MG5550, MG5560, MG5570, MG5580

MG5600 series: MG5610, MG5620, MG5640, MG5650, MG5660, MG5670, MG5680

MG5700 series: MG5710 MG5720 MG5721 MG5722 MG5740 MG5750 MG5751 MG5752

MG5753 MG5760 MG5765 MG5766 MG5770 MG5780 MG5790 MG5795

MG6700 series:

MG6800 series: MG6820 MG6821 MG6822 MG6840 MG6850 MG6851 MG6852 MG6853

MG6860 MG6865 MG6866 MG6870 MG6880 MG6890

MG6930

MG7700 series: MG7710 MG7720 MG7740 MG7750 MG7751 MG7752 MG7753 MG7760

MG7765 MG7766 MG7770 MG7780 MG7790

MG5540, MG5640, MG5650, MG5740, MG6840,

MX-series

MX320 series: MX320, MX328

MX330 series: MX330, MX338

MX340 series: MX340, MX347, MX348

MX350 series: MX350, MX357, MX358

MX360 series:

MX370 series:

MX390 series:

MX470 series: MX471, MX472, MX474, MX475, MX476, MX477, MX478
MX450 series:
MX490 series: MX491, MX492, MX494, MX495, MX496, MX497, MX498, MX499
MX520 series:
MX530 series: MX531, MX532, MX534, MX535, MX536, MX537, MX538
MX920 series: MX924,
MX710 series:
MX720 series:
MX890 series:
TS-series
TS200 series:
TS300 series:
TS3100 series: TS3110 TS3120 TS3122 TS3129 TS3140 TS3150 TS3151 TS3160 TS3165
 TS3166 TS3170 TS3170S TS3177S TS3180 TS3190 TS3195
TS5100 series: TS5110 TS5120 TS5140 TS5150 TS5151 TS5160 TS5170 TS5180
TS6100 series: TS6110 TS6120 TS6140 TS6150 TS6151 TS6160
TS8100 series: TS8120, TS8140, TS8150, TS8151, TS8152, TS8160, TS8170, TS8190,
 TS8195
TS9100 series: TS9120, TS9140, TS9150, TS9155, TS9160, TS9170
TR-series
TS5000 series: TS5010 TS5020 TS5040 TS5050 TS5051 TS5053 TS5060 TS5070 TS5080
 TS5090
TS6000 series: TS6010 TS6020 TS6040 TS6050 TS6051 TS6052 TS6060 TS6070 TS6080
TS7500 series:
TS8000 series: TS8010 TS8020 TS8040 TS8050 TS8051 TS8052 TS8053 TS8060 TS8070
 TS8080 TS8090
TS8500 series:
TS9000 series: TS9010 TS9020 TS9040 TS9050 TS9055 TS9060 TS9080
XK-series
XK50 series:
XK70 series:

**PRINTERS THAT CAN NOT BE RESETED MG24xx, MG2910 and E400 ix2810 MG2580S IP2880
 E408 E418 E468 AND WHAT IS MARKED WITH (# 1). Disposable**

PUT IN SERVICE MODE:

1.-Enter **maintenance mode**, operation is as follows:

With the printer turned off

- press cancel button together with button on
- now release only the cancel button (NOT ON ON)
- Press 5 times the button CANCEL and release the two buttons
- the LED must remain lit (POWER BUTTON)

**NOTE: IF YOU ALREADY TO RESET WITH OTHER RESETS ST3200 ST3400 ST3600 ST4620
 ST4720 ST4905 ETC ... THE EEPROM IS ALREADY DAMAGED AND THIS RESET WILL NOT SERVE
 YOU, BY SENDING THE FOLLOWING MESSAGES ON YOUR PC: ERROR 006 ERROR 005 OR NO
 INCREASE IN MODE SERVICE.**

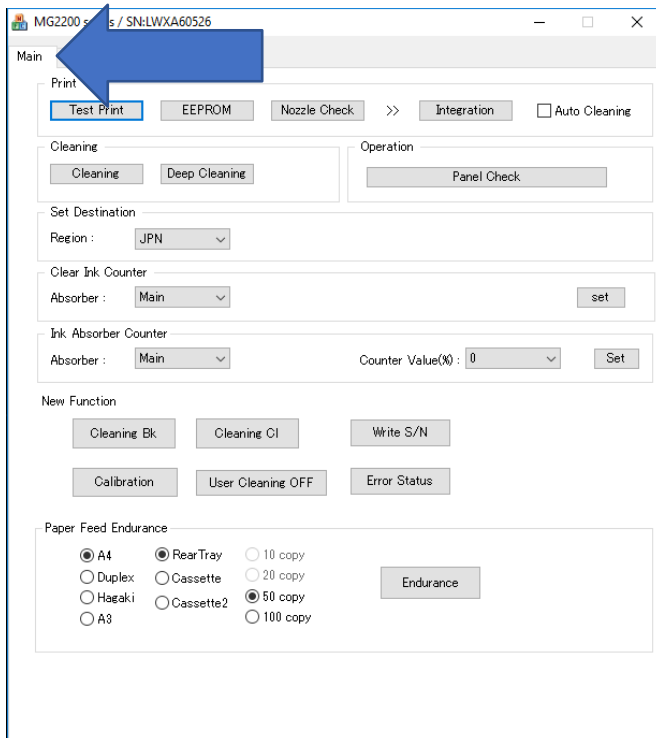


DISCHARGE OTHER PRINTERS AND THE ANTIVIRUS UNTIL YOU FINISH THE RESET

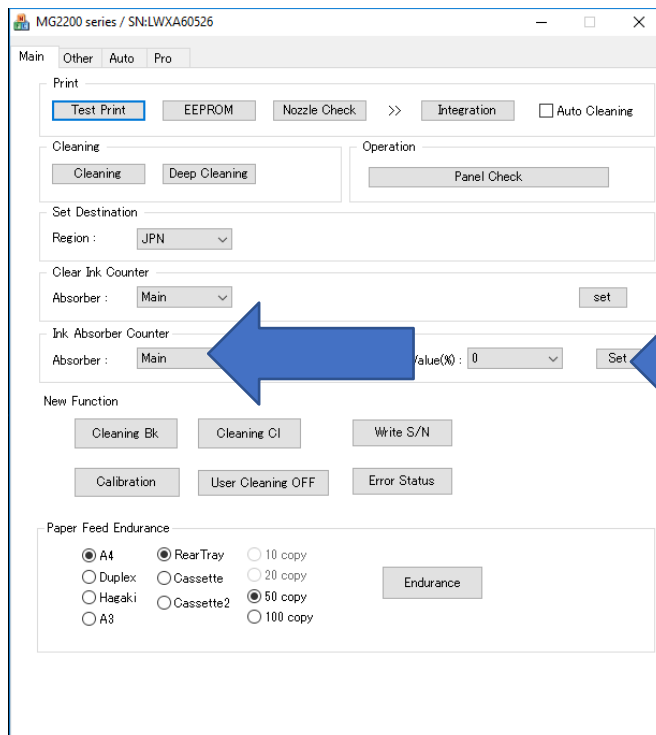
INSTRUCTIONS:

1.-EXTRACT THE CONTENT OF THE RAR THAT DOWNLOADED, NOW IN THE FILE ST-5103.exe RUN AS ADMIN SHOULD

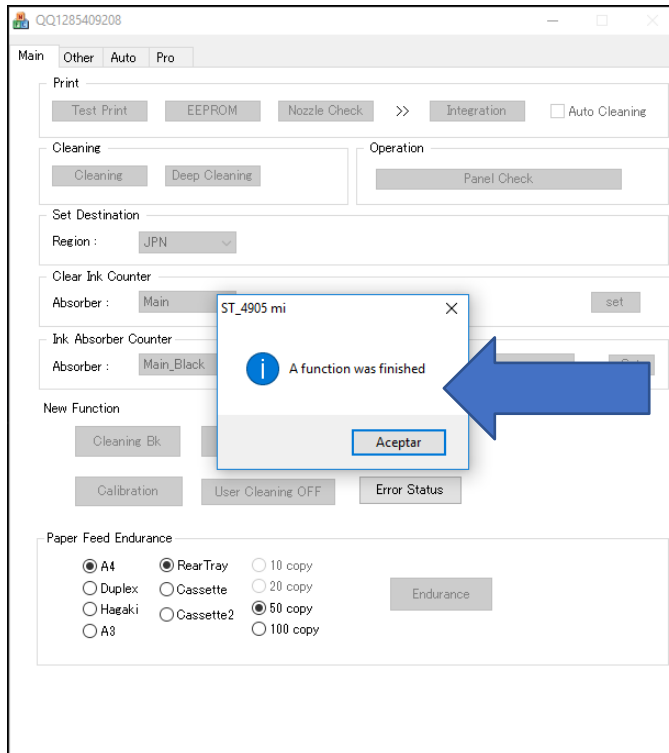
NOW BE IN MAIN



2.- IN INK ABSORBER COUNTER AND THEN SET

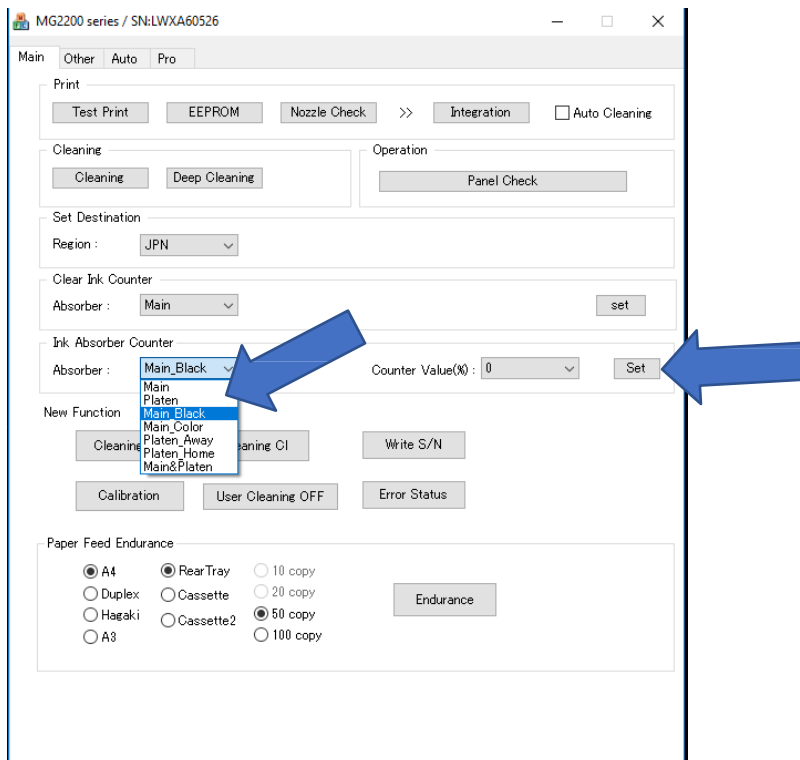


3.- GIVE YOU MESSAGE OF RESET

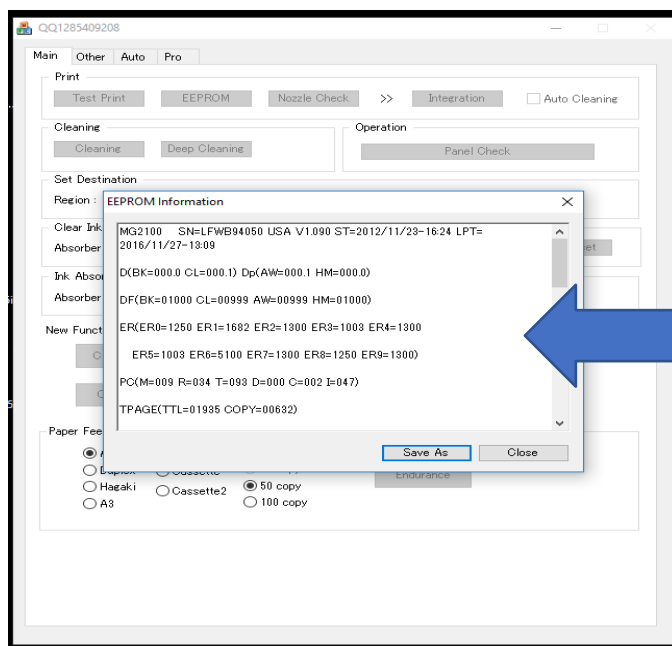
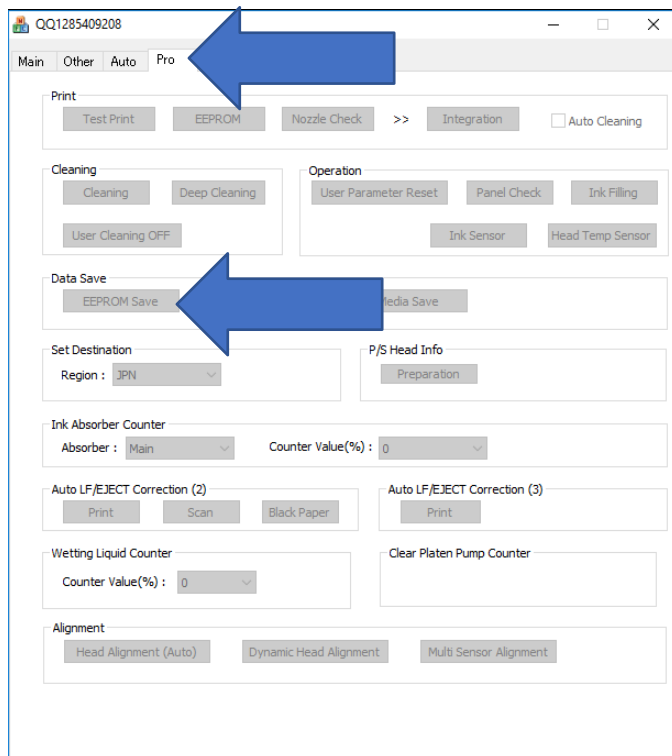


FOR OTHER MODELS YOU MUST SELECT INDEPENDENTLY EACH SUBMENU MORE SET

3.1 .-



4. REPORT OF ACCOUNTANTS (OPTIONAL)



5. - NOW YOU CAN TURN OFF YOUR PRINTER AND CLOSE THE PROGRAM
-READY CAN START UP AGAIN !!!!!

-NOTE: IF YOU ERROR FAILURE 002 FOLLOW STEP 3.1

(AND IF YOU GIVE THE MESSAGE ERROR CODE 006 THE EEPROM IS LOCKED).

(IF YOU CAN NOT ENTER IN SERVICE MODE OR IF THE MESSAGE ERROR CODE 006 OR 005 THE PLATE AND THE EEPROM IS LOCKED BY HAVING USED INCOMPATIBLE SERVICE TOOL AND NOW YOU CAN NOT DO THE PROG).

* YOU MUST REPROGRAM THE EEPROM WITH THE MINIPRO (ARCHIVES BIN AVAILABLE E401, E402, G1100, 2100 3100, 4100 MG2410, MG3510)

-DO NOT HANDLE OTHER OPTIONS YOU CAN LEAVE YOUR PRINTER INSTEAD UNLESS YOU KNOW YOUR FUNCTION

email: mjavicop@gmail.com

my blog: <http://resetpsonycanon.blogspot.com/p/service-tool-v5103.html>

Whatsapp: +593984405382